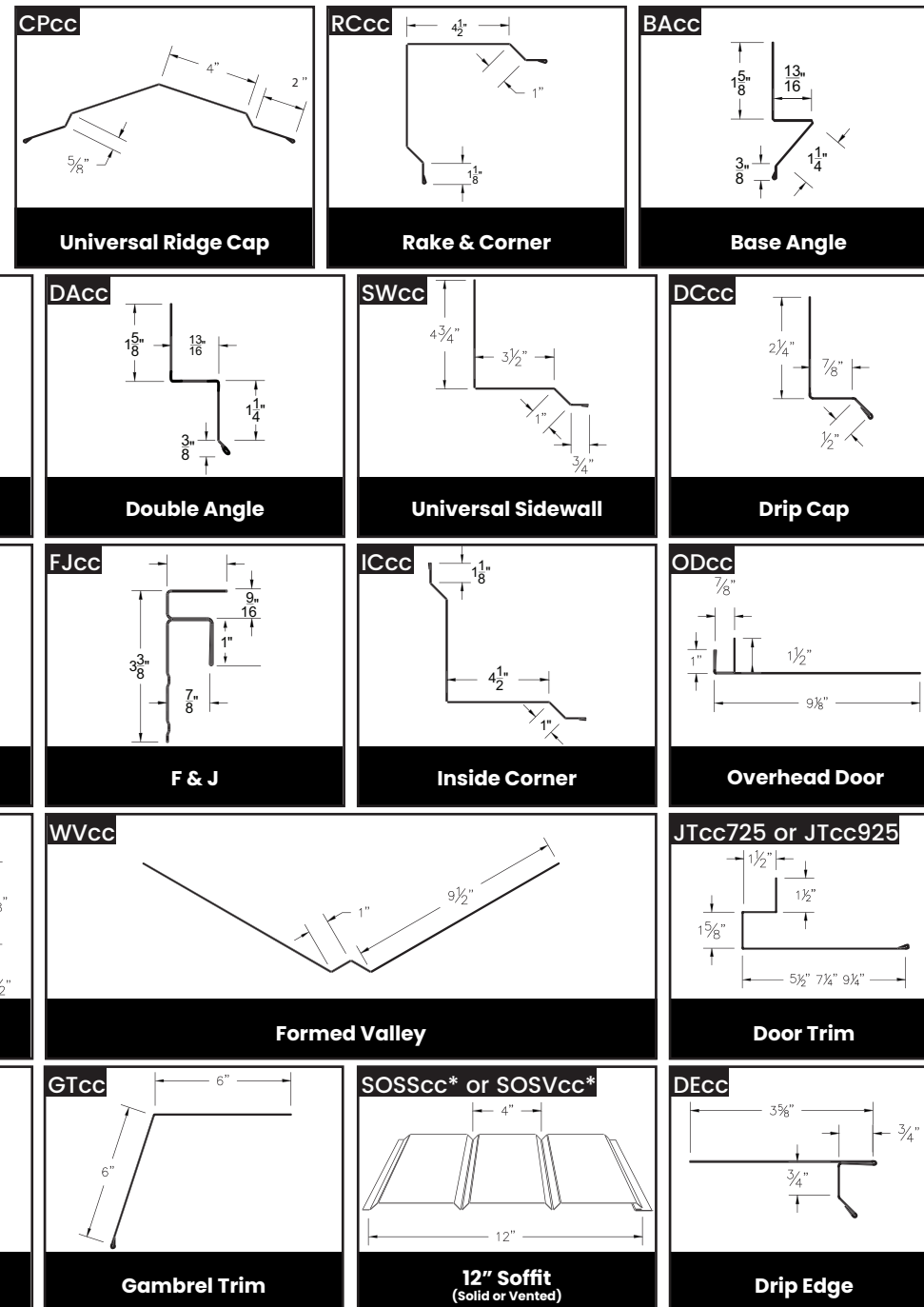


Drawings are not to scale.
Exact dimensions may vary.
Contact us about custom trims.
Item codes are in brackets.
cc - Color Code



Standard trims are available in 10' lengths.
Custom trim lengths and profiles up to 21' are available upon request,
including box gutters, downspouts, copings, and other specialty trim profiles.

DurableMetalRoofing.com
mannymtc@gmail.com
(607) 843-9570

223 Corbin Rd,
Oxford NY 13830



Tuff-Rib Metal Roofing & Siding Panel

COLOR CHART



We strive to make our color charts as precise as possible, but the accuracy of the painted chips is not guaranteed.
For 100% color matching, please request a free metal sample.

AG Panel - Smooth

28 Gauge G100 Galvanized | AZ50 Galvalume



AG Panel - Textured

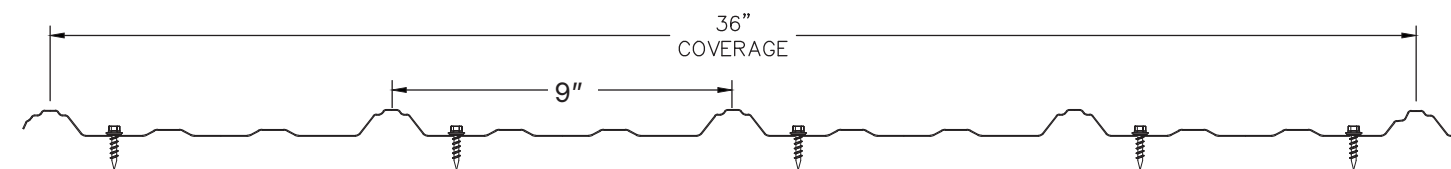
28 Gauge AZ50 Galvalume

★ Colors in stock (non-stock colors have 1-2 week lead time) | * Only available with Galvalume Panels



36" Wide Coverage • 9" Rib Spacing • 3/4" High Rib
 *Only available with Galvalume Panels.
 †Premium Color at Additional Cost.

ABM Panel Profile

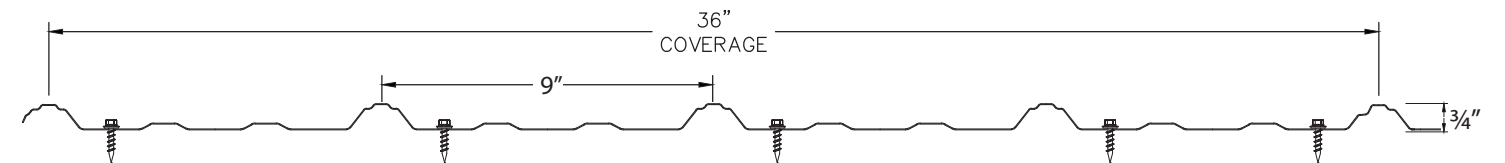


★ Colors in stock (non-stock colors have 1-2 week lead time)



Standard: 36" Wide Coverage • 3/4" High Rib • Subject to a Wide Underlap

ABM Panel Textured Profile (Acc)

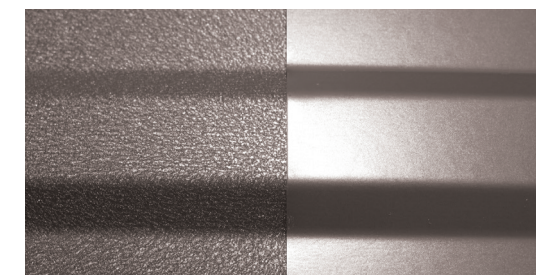


Why Choose Textured?

Our textured panels continue to be very popular in many residential applications.

Homeowners like it because the unique textured surface redirects sunlight for less glare than smooth panels. Plus the textured panels are less prone to "oil canning" which makes for a more attractive roof.

Contractors like it because the texture provides more grip during installation than smooth panels.



TEXTURED

SMOOTH

What is the difference between Galvalume and Galvanized Substrates?

On the surface, they might look the same because they are both coated with the same Sherwin-Williams® WeatherXL™ paint system. But it's what's underneath that counts. Galvalume is made from bare steel covered with a mixture of zinc, aluminum, and trace amounts of silicon to improve its long-term weathering capabilities.

Painted Galvalume is known to exhibit more short-term edge rust and tension bend stains than Galvanized.

Galvanized steel is made by passing bare steel through a bath of molten zinc at 842 degrees Fahrenheit. The zinc coating that gives the steel sheet its resistance to weathering and rust, offers better cathodic or sacrificial protection for scratches and cut edges.

IMPORTANT: Galvanized steel is known to resist ammonia better than Galvalume. That is why we strongly recommend Galvanized steel in the presence of vapors from animal confinement.